

---

# Superscape

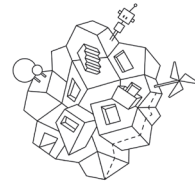
---

# 2018

---

**JP** architektur perspektiven

Press Release  
Shortlist



## Superscape 2018 | JP architektur perspektiven

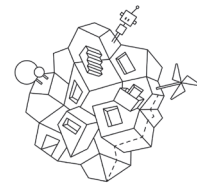
The Superscape is awarded every two years to innovative and visionary architectural concepts. It focuses on the interaction of private living space with urban contexts, viewed from an interdisciplinary perspective. Superscape 2018 is searching for innovative approaches for the topic URBAN RENEWAL. Departures, Renewal and Stability in the Digital Age.

Ever increasing in size, the city has created building typologies and structures in the 20th century which have left their imprint upon urban space and its dynamic to this day. Increasing urbanisation and digitisation drive social change processes with ever-increasing speed. Architectural construction measures can hardly be adapted to this speed while still conserving resources. Between analogue and digital worlds, sharing and prosuming, data security and targeting via data harvesting, ways of life, consumer and communication habits are also changing. This is associated with higher demands for urban living spaces that are geared toward the future, as an increasing amount of existing building structures and substance becomes redundant.

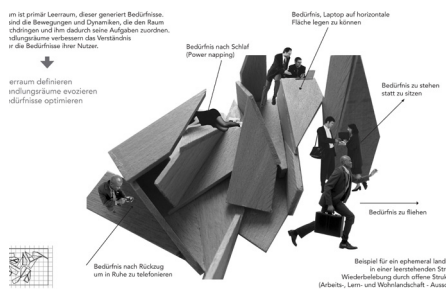
In the context of social and technical networking, ecological sustainability, smart cities and smart homes, the goal was to explore innovative potentials and problem solutions that architecture can offer, and to dare to imagine visionary future scenarios and design experiments in response to spatial and social challenges in the urban space in 2050.

In total, 69 concept sketches were submitted by participants from more than 20 nations. The jury has now nominated six concepts for the short-list, to be elaborated further over the summer. The jury members for Superscape 2018 are Marie-Therese Harnoncourt-Fuchs, Ina Homeier und Christoph Luchsinger.

The architectural award carries a cash value of 10,000 Euro. The short-list nominees will receive an allowance of 2,000 Euro to help defray their costs.



## Superscape 2018 | Shortlist

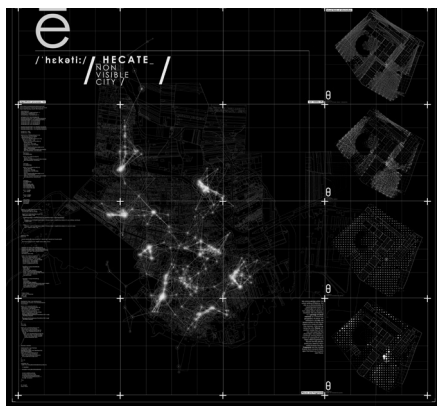


### Ephemeral Landscapes:

#### Redefining the narrative of urban space

Julia Dorninger, Vienna (AT)

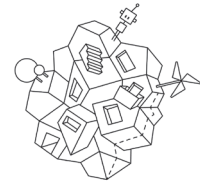
Ephemeral Landscapes questions established planning processes, methods in architecture and its parameters as well as the rigid structures resulting of these planning specifications. Ephemeral Landscapes evokes radical rethinking in the development of space, which is here primarily understood as an empty space which generates needs. This physical vacuum has the energy for material expansion: movement and actions assign space its functions. Resulting in a continuous process, in which spaces are continuously developed depending on situations.



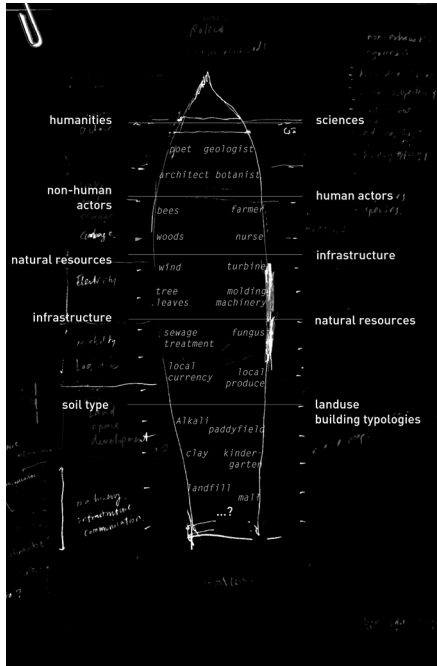
### Hecate Non Visible City

Yota Passia, Panayotis Roupas,  
studioentropia architects, Athens (GR)

The project theorizes the city as multiple structures of properties, tendencies and capacities. While properties can be observed, tendencies and capacities lie in the virtual level, they are only actual when exercised. Hecate is an interactive city scape, which is visualized as a network of richly interconnected nodes of varying intensities, each representing information flows between the system and the city. Hecate associates and disassociates, controls, determines and consumes both existing and emerging urban structures.



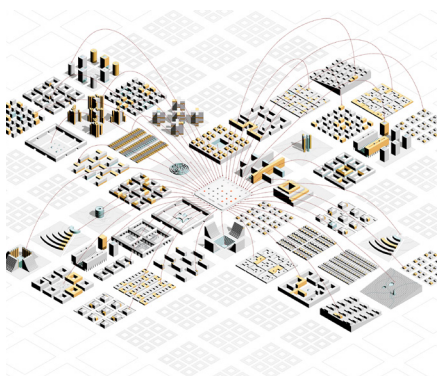
## Superscape 2018 | Shortlist



### Posthuman ARCHE

Ka-man (Carmen) Lam, Weimar (DE)

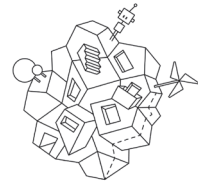
Under pressures of new developments from the Anthropocene to the Technosphere, named a “posthuman condition”, our practices of restoring human habitants demand a deep rethink. This presents the imminent question: How should human collective on earth be replanned or reimagined? The proposal calls for a new collective among the posthuman subjects, non-human actors, earth system, natural resources and infrastructural networks, which then forms a missionary crew. Inspired by the well-known biblical story, the act of pairing is re-interpreted as algorithmic strategies for reciprocity and resilience.



### The Domestic Discontinuous

Ioana Suliciu, Vienna (AT)

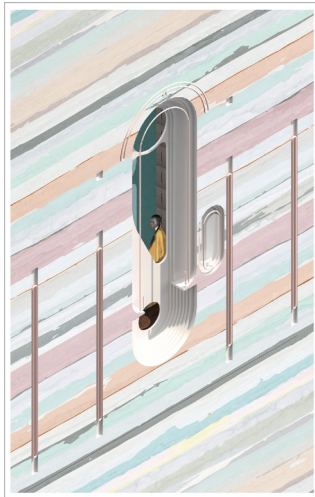
Increasingly, people inhabit temporary homes and combinations of flats. The home's no longer a monolith, but a myriad of discontinuous living environments, re-meshed through a continuous presentation of its instagrammed contents and exchange between its often discontinuous components. Imagine a series of freely assemblable spaces, each suitable to different needs, like a hobby, job or partner constellation or simply to a specific life phase. The distinction between private and public will blur even further and mixes of use or social groups will be supported.



## Superscape 2018 | Shortlist

### The New Anthropocene

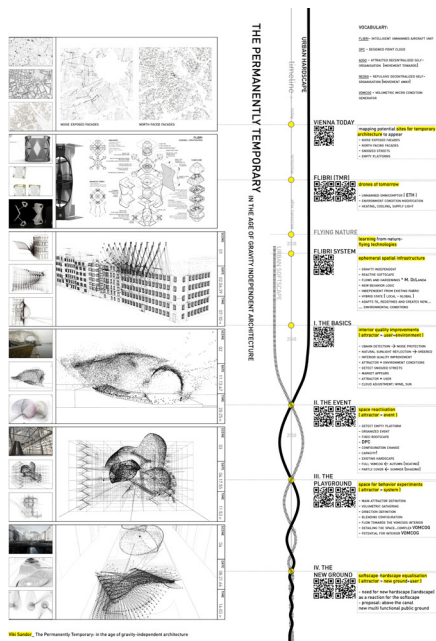
Jan Sienkiewicz, Copenhagen (DK)



Appetitive reality as a view by a human looking  
upward into space, the architect of which we  
imagined and the fiction - that

201422

The New Anthropocene is an exploration of the two forces that shape human society in the 21st century - technological progress and radical humanism. The empowerment of the individual is faced with an emergence of non-human intelligences, creation of fully immersive simulations and the resulting explosion of reality into a multifaceted hyperreality. As a result of humanisation of the network and a structured simulation, a system of mutual understanding between human and nonhuman intelligences is built, shaping the spaces in a continuous process of reconstruction.

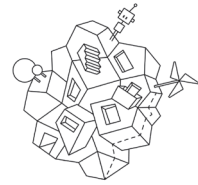


### The Permanently Temporary:

in the age of gravity-independent architecture

Viktória Sándor, Vienna (AT)

Emerging issues due to population growth in urban environments and changing patterns of social behaviour require new strategies for architecture and urban design. The contrast between the rigidity of the physical environment and the rising value of flexibility generates tension. One way of facilitating to release this tension is increasing the level of adaptation and responsiveness of the physical space and therefore programming the existing city volume more efficiently. Aerial robots could provide temporary spaces that are integrated with the existing urban-fabric to increase the city's dynamism.

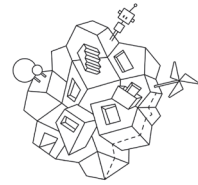


## The Award Process

The first phase of the architectural competition is an anonymous, open process. After the expert jury has nominated the shortlist, the individual protagonists will be invited to a non-anonymous process, during which the project sketches are to be elaborated further. The legal basis for the process is this call for entries and the answers to the questions asked of the procedural organisation, which can be viewed in an anonymised version at [www.superscape.at](http://www.superscape.at). The competition will be carried out in German. Submissions in English are accepted as well. By submitting materials, candidates acknowledge the rules of the competition. The decisions of the expert jury are final. The adjudication and the ranking of the submissions cannot be appealed. Legal recourse is excluded.

## JP Immobilien | Motivation of the Organiser

JP Immobilien develops not only living spaces, but living environments. Therefore, it strives to support social, cultural and environment-related issues as part of its corporate responsibility. Since architecture and urban planning always also interfere with the social environment, it is important to JP Immobilien to make a lasting contribution to the tension-filled field of architecture, its protagonists, inhabitants and designers. Thus, Superscape focuses mainly on creating a long-term workshop of ideas, providing visionary concepts that deliver impulses for today's projects.



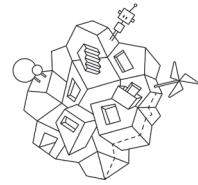
## Superscape 2018 | Jury

### Marie-Therese Harnoncourt-Fuchs

Marie-Therese Harnoncourt-Fuchs is a graduate of the University of Applied Arts in Vienna and founded the next ENTERprise Architects in 2000 together with Ernst J. Fuchs. From the beginning they have operated in a field that ranges from experimental installations to architectural practice, treating both approaches as equal and mutually influential. Projects include Open-air pavilion Wolkenturm Grafenegg /AT, Lakeside Bath Caldaro/ IT, Pilotproject Kempelenpark and HAWI at the 15th Architecture Biennale in Venice / IT. Since 1998 she has held teaching appointments at the University of Applied Arts Vienna/AT, University of Technology Vienna/AT, University of Art and Design Linz/AT, Academy of Fine Arts and Design Bratislava / SK, ESA École Spéciale d'Architecture Paris/FR. Current member of juries or advisory boards such as BIG - advisory board of art, Forum Morgen Stiftung.

### Ina Homeier

Ina Homeier is an architect and has been working for the urban planning department of the City of Vienna since 1994. She was also responsible for land use and district planning (21st district) for several years. From 1998 to 2001 she worked at the Directorate-General for Research of the European Commission, where she was responsible for urban planning issues and research projects in the Key Action „The City of Tomorrow and Cultural Heritage“. In the autumn of 2001, she returned to the Viennese Municipal Department for Urban Development and Planning, where she focused on EU research projects. Later she moved to Portugal for several years, where she was acting partner in a Portuguese company. Since summer 2011, she has again been working for the Urban Planning department where she is Head of the Smart City unit and coordinates the smart city activities of the City of Vienna with regard to strategy and content. Several national and EU-funded projects have been implemented and Smart City applications have been supported under her watch. At the moment she is working on the implementation of the first monitoring of the Smart City Wien Framework Strategy.

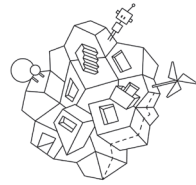


## Superscape 2018 | Jury

### Christoph Luchsinger

Christoph Luchsinger graduated in Architecture at the ETH Zurich in 1979 and is professor at the faculty of Architecture at the Vienna University of Technology since 2009. From 1980 to 2009 he has been holding several teaching and research appointments for urban history and urban design i.e. at the ETH Zurich and the ZHAW Winterthur with a focus on urban strategies and urbanized landscapes. Further he has been working for several years as editor of the Swiss Architectural Review Werk, Bauen + Wohnen. Luchsinger was guest-professor for architecture 2003 at the TU Ljubljana/SI and 2004 at the TU Graz/AT. From 2013 to 2017 Luchsinger was the director of the TEMPUS education project „Sustainable Regional Development“ SEHSI in collaboration with several international universities. Since 1990 he runs an architectural office in Lucerne/CH together with Max Bosshard and since 2013 in Vienna/AT. Until 2019 he will be director of the project MEMUD for a curriculum of a middle-european master of urban design in collaboration with the Universities of Ljubljana/SI and of Split/HR.





## Superscape 2018 | Submission Statistics

### Europe:

Austria:	21
Germany:	9
Spain:	2
Italy:	1
Czech Republic:	1
Denmark:	2
Sweden:	1
Greece:	1
Bulgaria:	1
Romania:	1
Macedonia:	1
Serbia:	1

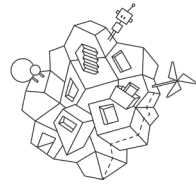
### Global:

Russia:	5
USA:	4
Iran:	3
Bahrain:	1
India:	2
Singapore:	1
Uruguay:	1
Cameroon:	1

Multinational: 4 (1 Italy/India, 1 Germany/USA, 1 Germany/Italy,  
1 Great Britain/India)

Not stated: 3

Total: 69 submissions



Superscape

2018

architektur perspektiven

## About

### Initiator:

JP IMMOBILIEN, [www.jpi.at](http://www.jpi.at)

### Press contact:

Catharina Cramer

art:phalanx

Kultur & Urbanität

Tel: +43 (0)1 524 98 03 - 27

[press@superscape.at](mailto:press@superscape.at)

### Concept & project realisation:

art: phalanx

Kultur & Urbanität

[www.artphalanx.at](http://www.artphalanx.at)

### Design:

im Kollektiv für Kommunikation

und Gestaltung, [www.imkollektiv.at](http://www.imkollektiv.at)

Further information and concept excerpts are available for download at [www.superscape.at](http://www.superscape.at).